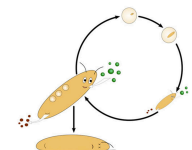




INVESTIGATE THE
SENSITIVITY OF THE
PEARL OYSTER
PINCTADA
MARGARITIFERA
TO ENVIRONMENTAL
CONDITIONS

IN THE CONTEXT OF
BLACK PEARL FARMING



DEB2019

1-12 April 2019 / Brest (France)

Nathanael Sangare*, Alain Lo-Yat, Gilles Le Moullac, Romain Legendre, Yoann Thomas, Laure Pecquerie, Benoit Beliaeff, and Serge Andréfouët

*nathanael.sangare@ifremer.fr



Context

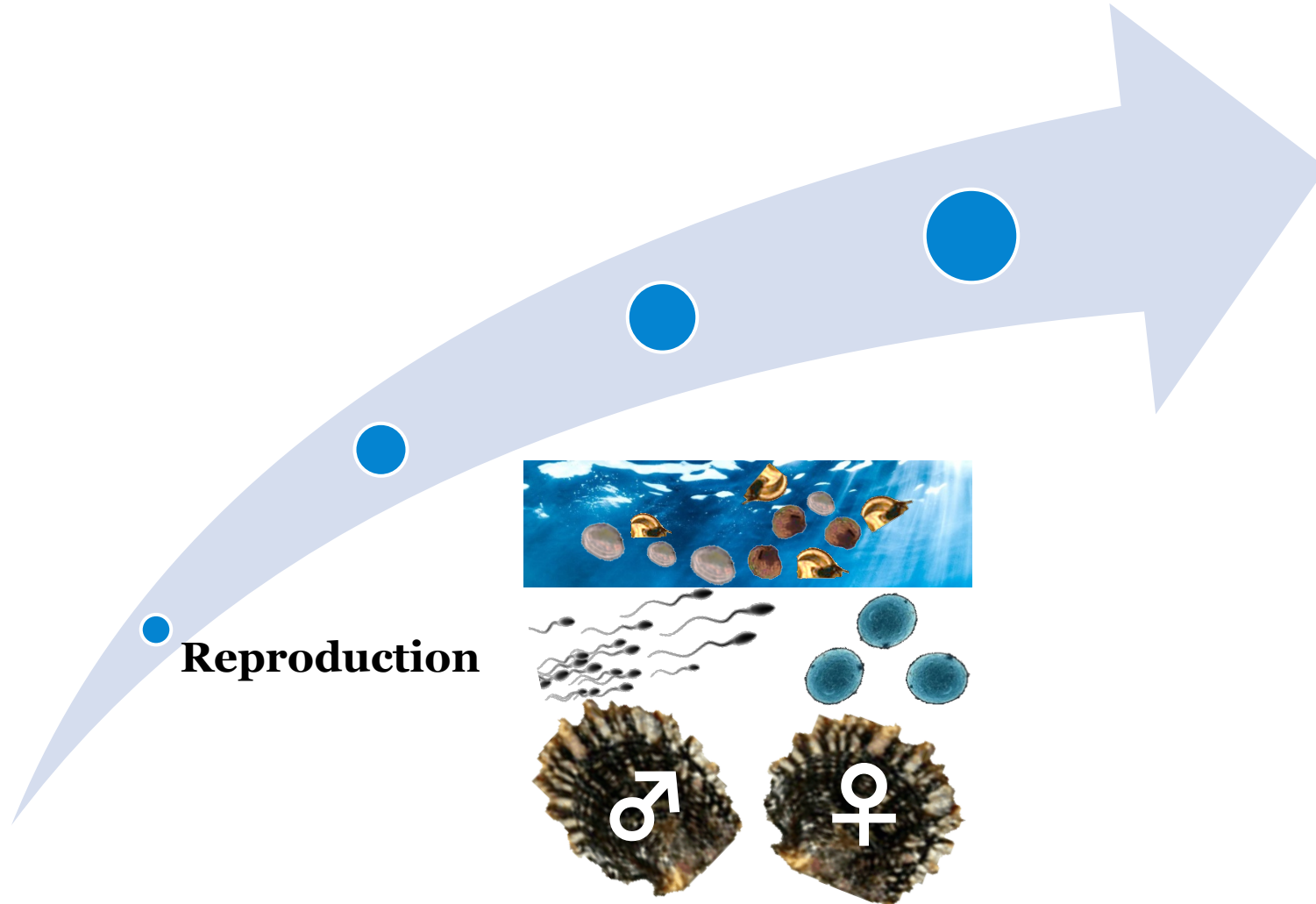
Key figures of pearl farming:

- 26 atolls and 4 islands
- 80 M\$ per year
- 5000 jobs

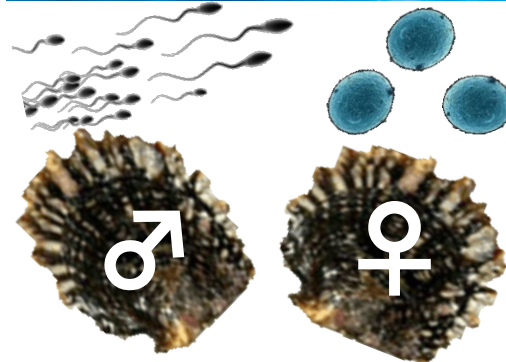




Key steps of black pearl farming

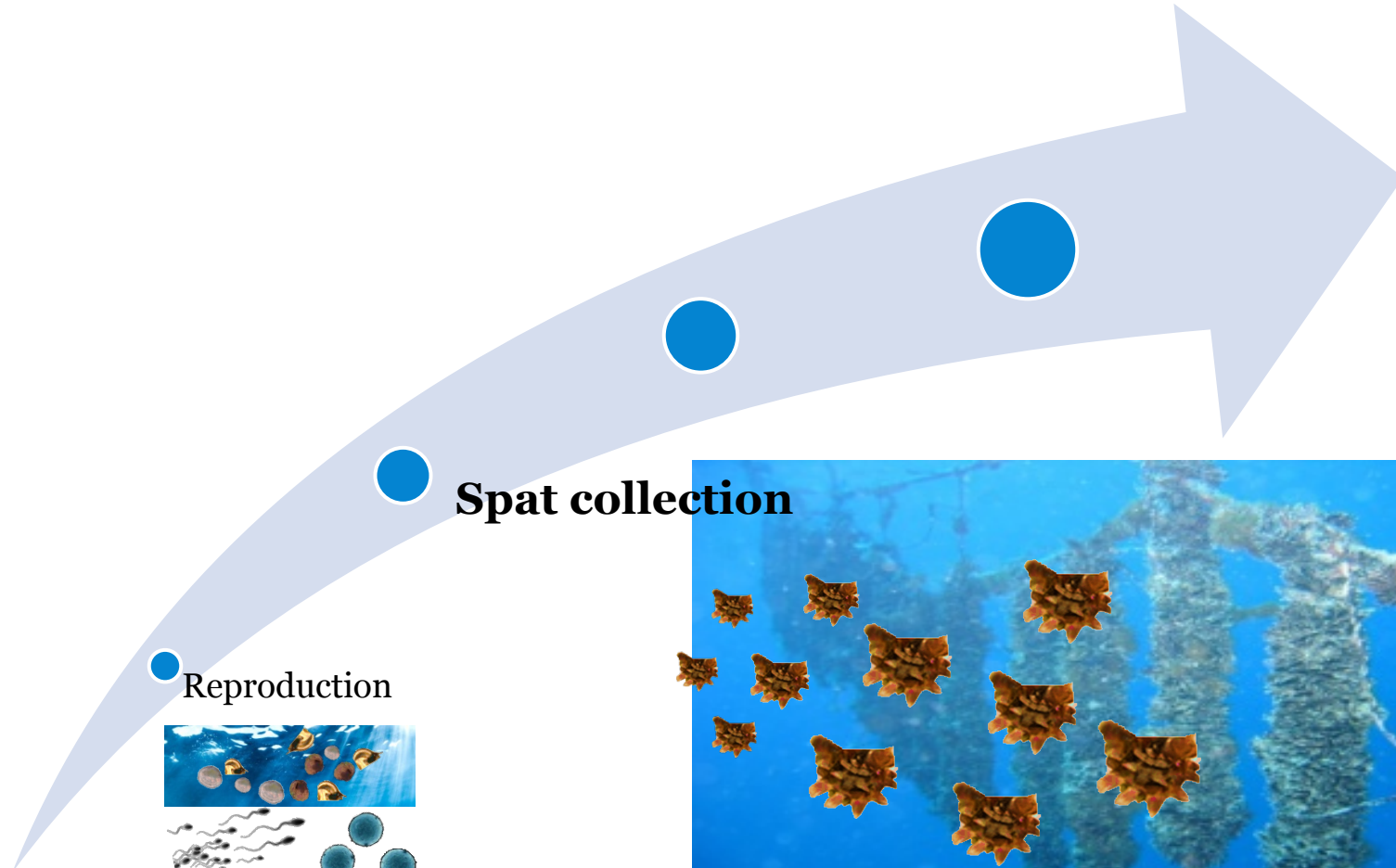


Reproduction

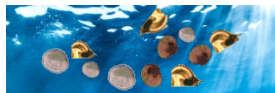




Key steps of black pearl farming



Reproduction

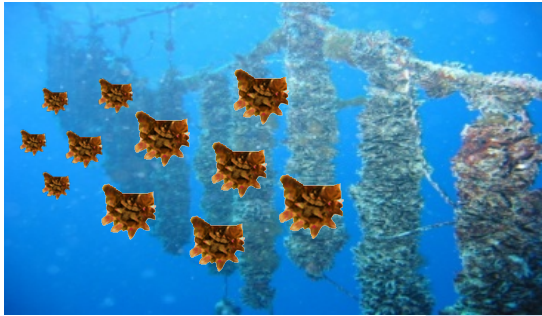


Spat collection



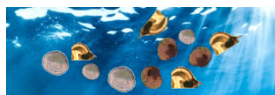


Key steps of black pearl farming



● Spat collection

● Reproduction

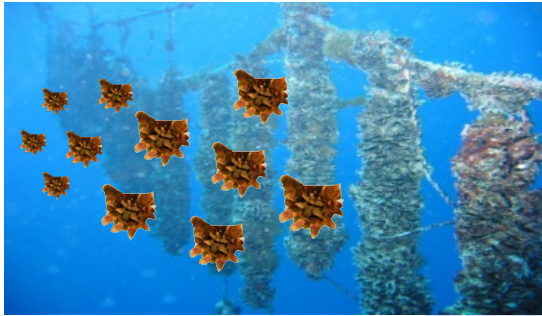


● Graft



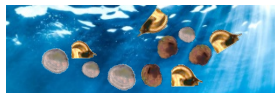


Key steps of black pearl farming



● Spat collection

● Reproduction



● Graft



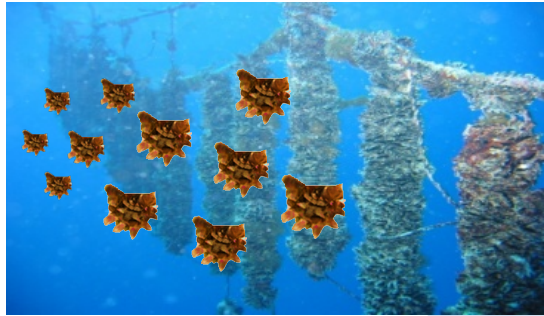
Livestock farming



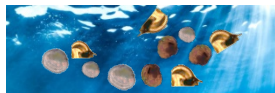
©Gauguin's Pearl 2019



Key steps of black pearl farming



Reproduction



Spat collection

Graft

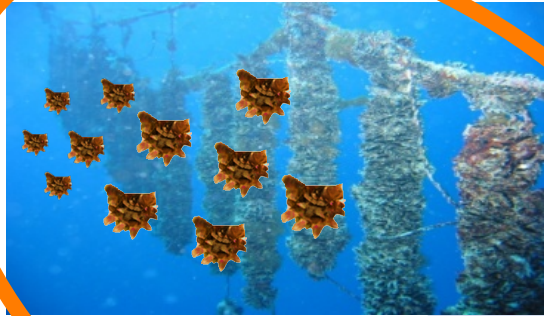


Livestock farming

Harvest



Key steps of black pearl farming



Spat collection

Reproduction



Graft



©Gauguin's Pearl 2019



Livestock farming

Harvest





Aims

Investigate **environmental factors** underlying **recruitment variability**



Aims

Investigate **environnemental factors** underlying **recruitment variability**

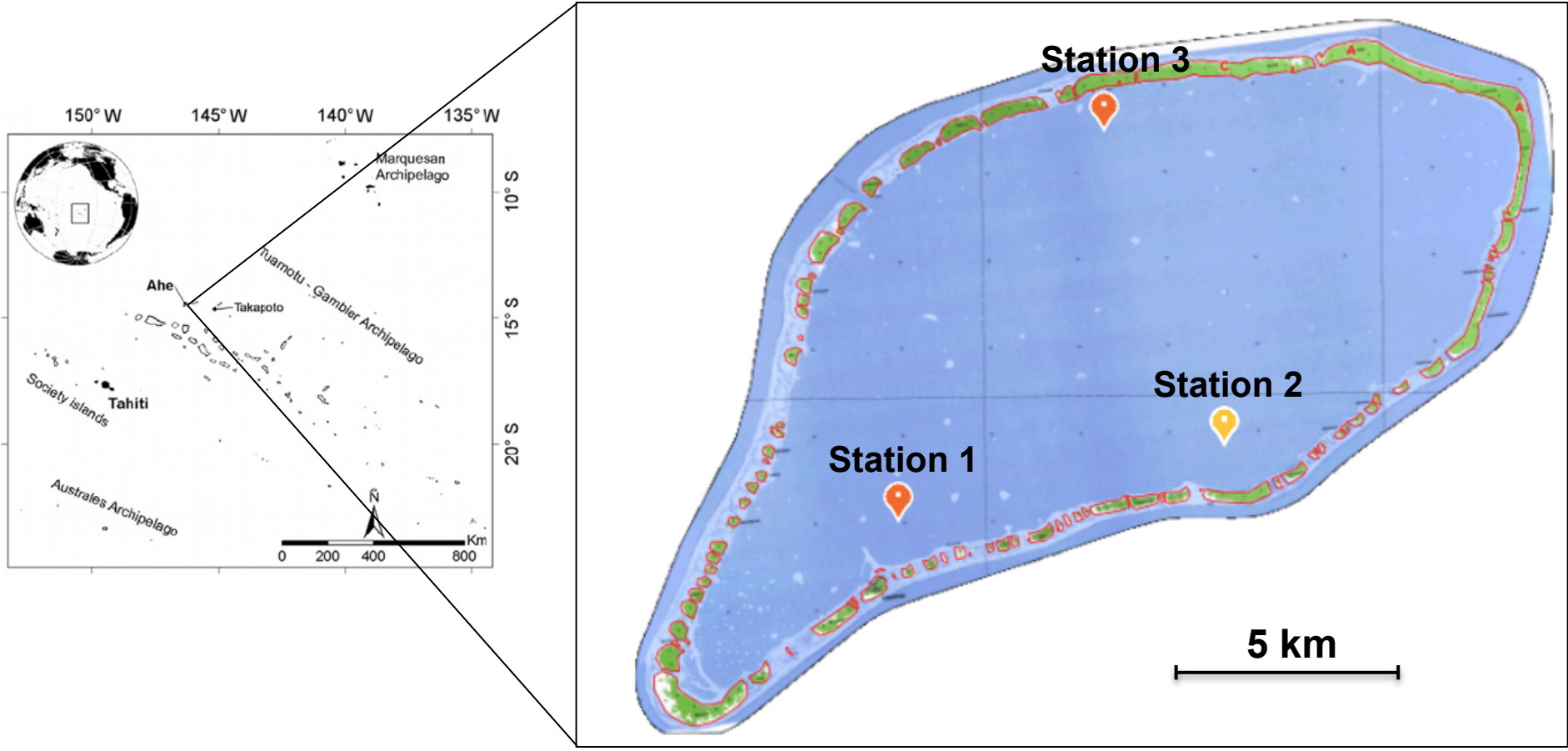


Develop a **spat collection forecasting system** for optimization of professional practices and spatial zoning planning



Study site, the Ahe lagoon

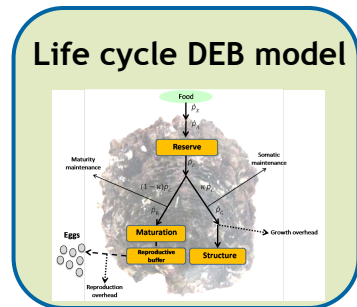
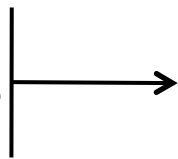
3 sampling stations





Modeling Framework

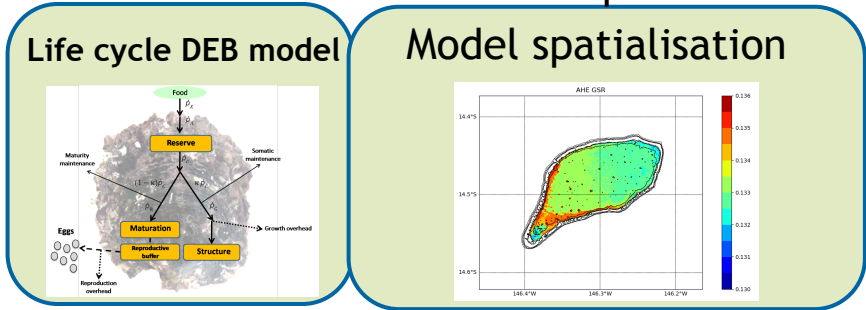
- Food
- Temperature





Modeling Framework

- Sources & quantity of larvae
- Larval development

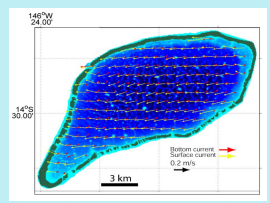


- Food
- Temperature



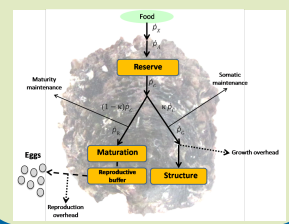
Modeling Framework

Hydrodynamic (MARS-3D)

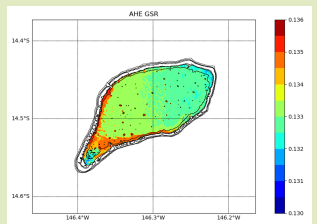


- Sources & quantity of larvae
- Larval development

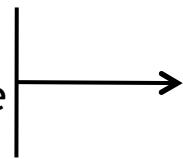
Life cycle DEB model



Model spatialisation



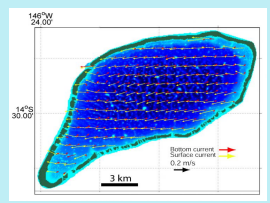
- Food
- Temperature





Modeling Framework

Hydrodynamic (MARS-3D)

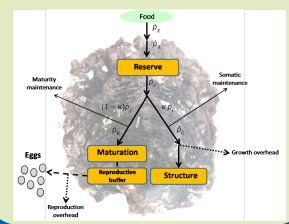


Recruitment

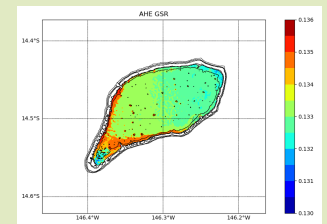


- Sources & quantity of larvae
- Larval development

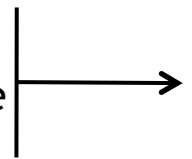
Life cycle DEB model



Model spatialisation



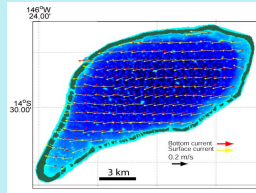
- Food
- Temperature





Modeling Framework

Hydrodynamic (MARS-3D)

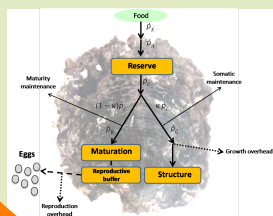


Recruitment

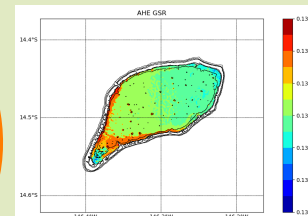


- Sources & quantity of larvae
- Larval development

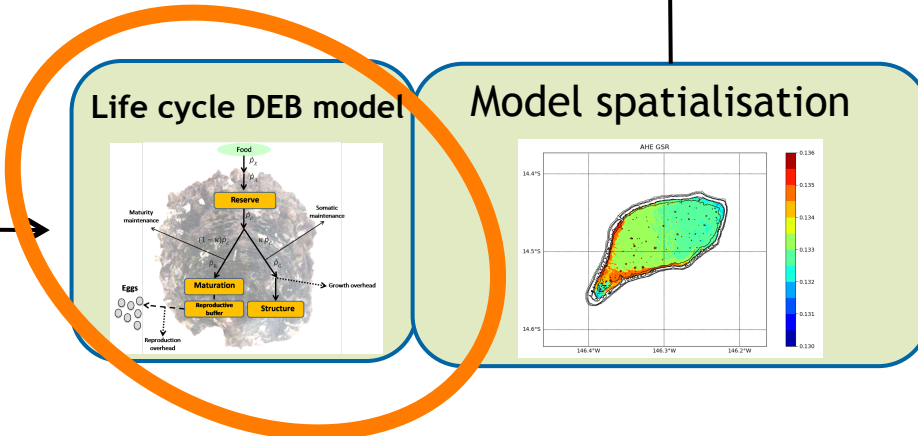
Life cycle DEB model



Model spatialisation



- Food
- Temperature

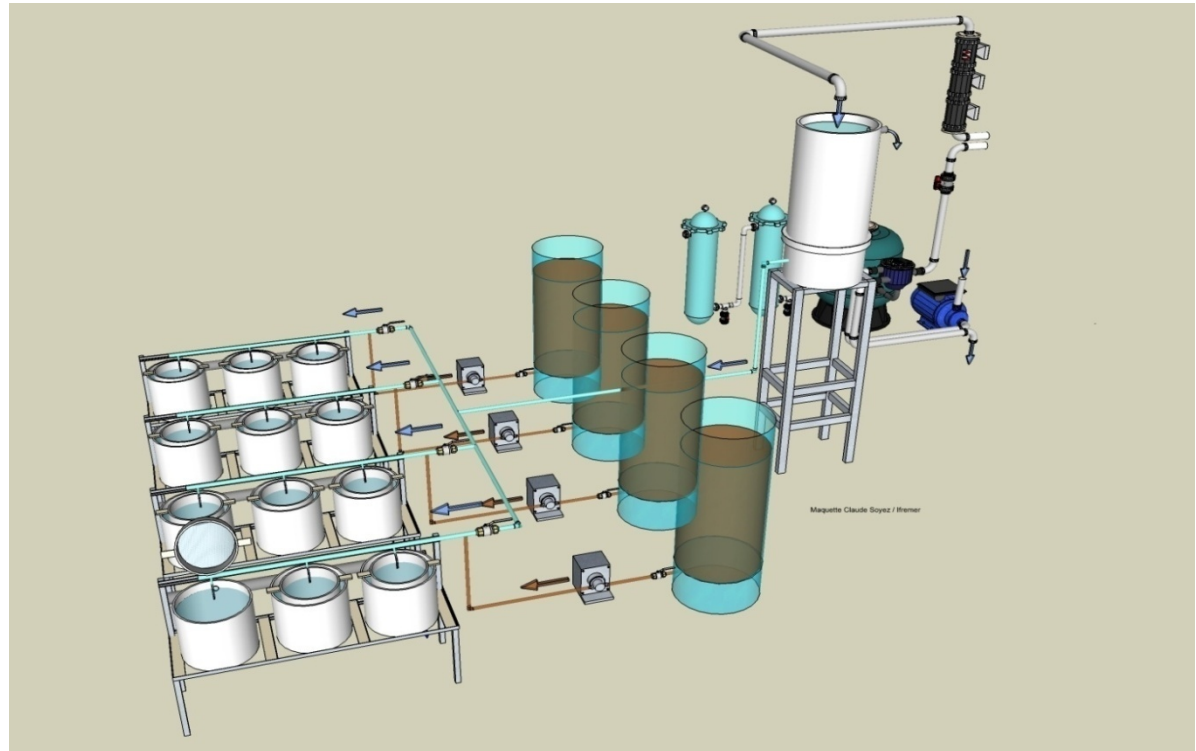




Larvae stage and fixation process

- Larval rearing under controlled conditions

For **4** different **trophic levels** (2,5 ; 7,5 ; 15 ; 30 cell. μL^{-1})





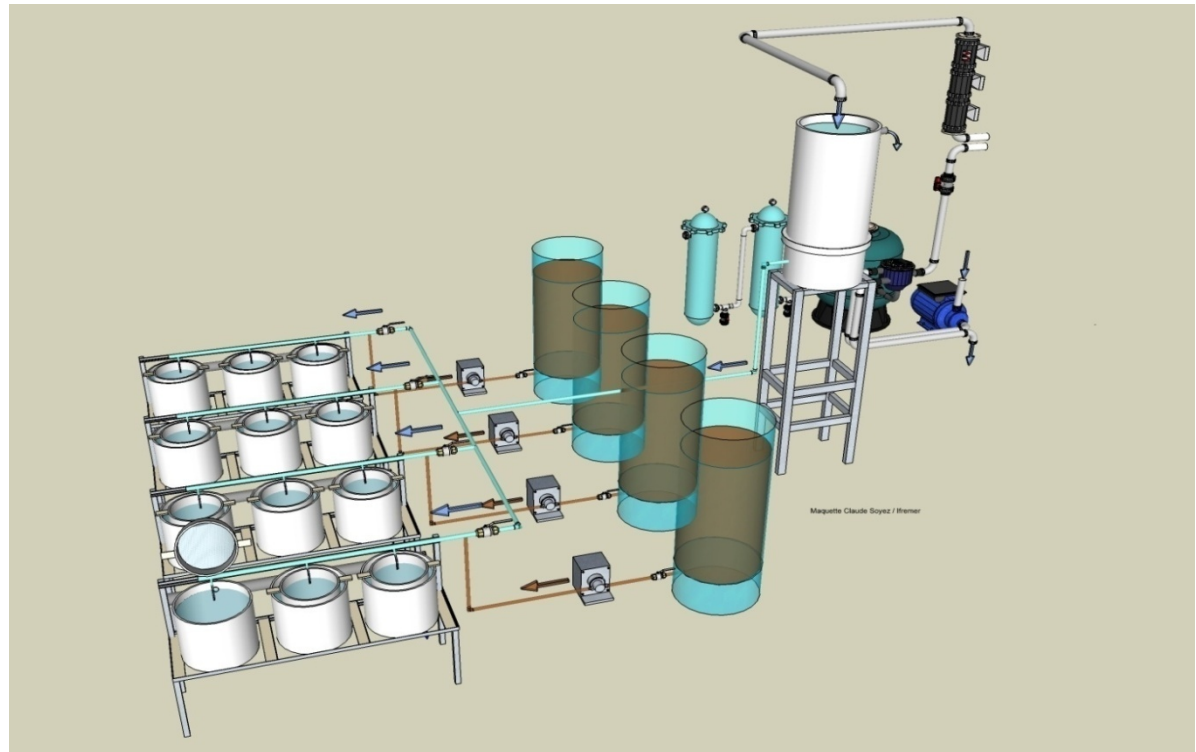
Larvae stage and fixation process

- Larval rearing under controlled conditions

For **4** different **trophic levels** (2,5 ; 7,5 ; 15 ; 30 cell. μL^{-1})

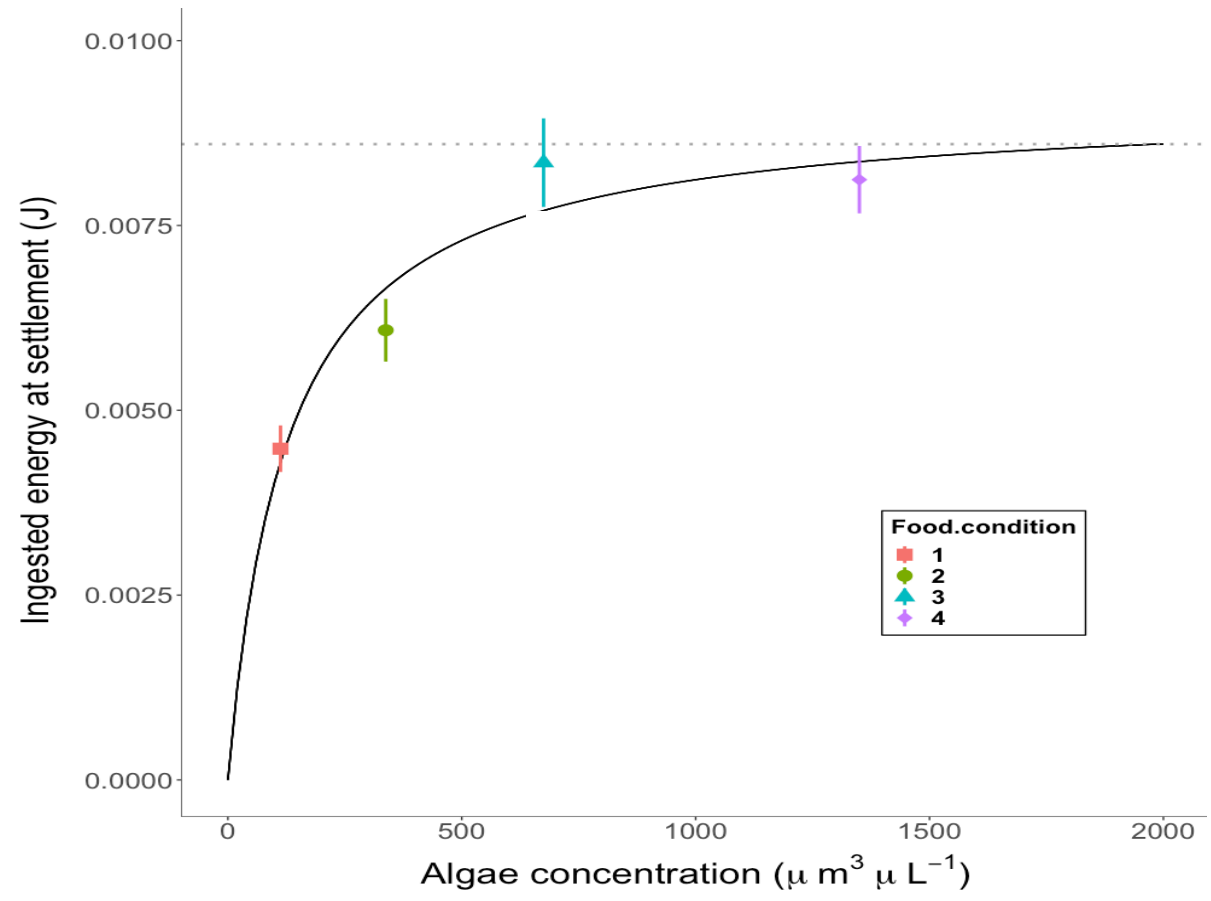
Assessment of the **food availability** on the rates of:

- **Development**
- **Growth**
- **Feeding**
- **Survivorship**
- **Respiration**



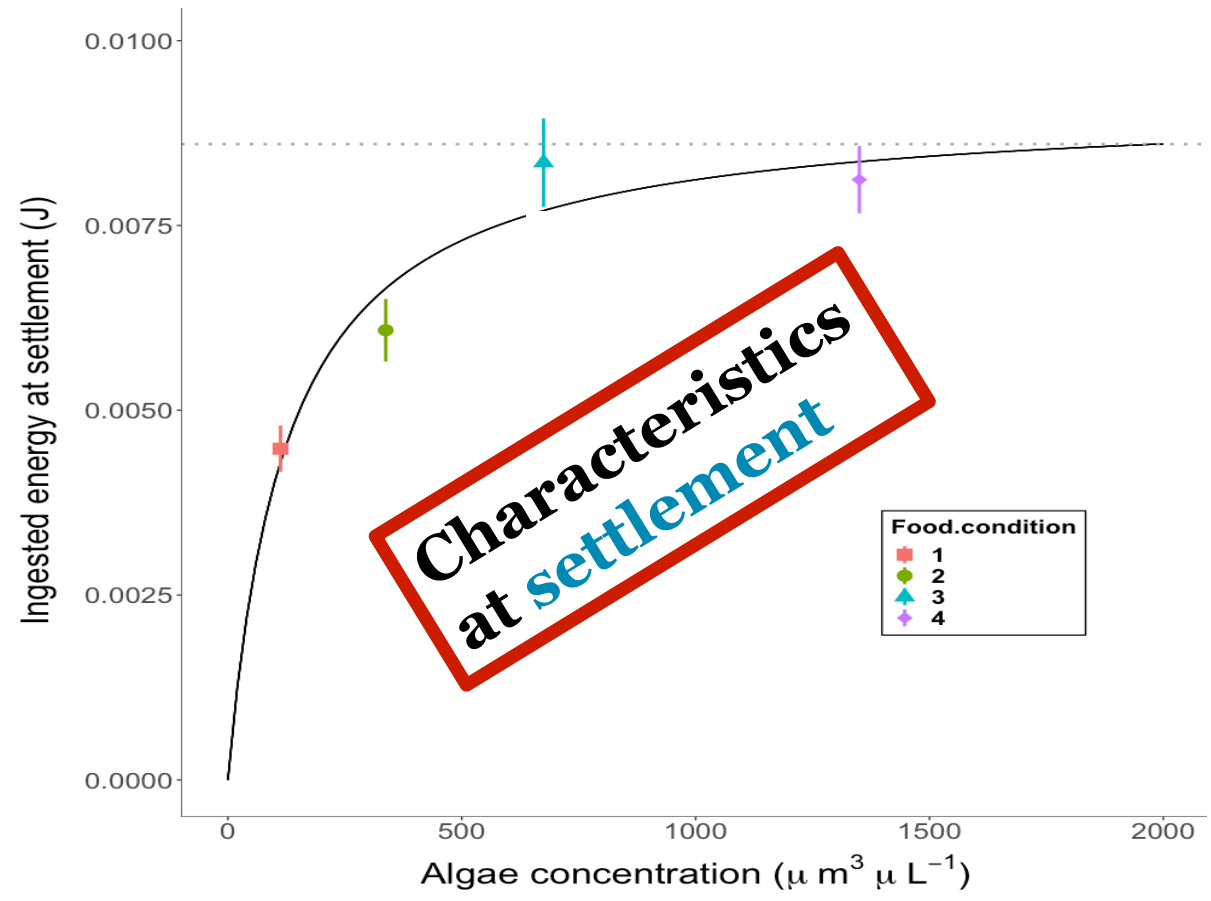


Characteristics at settlement



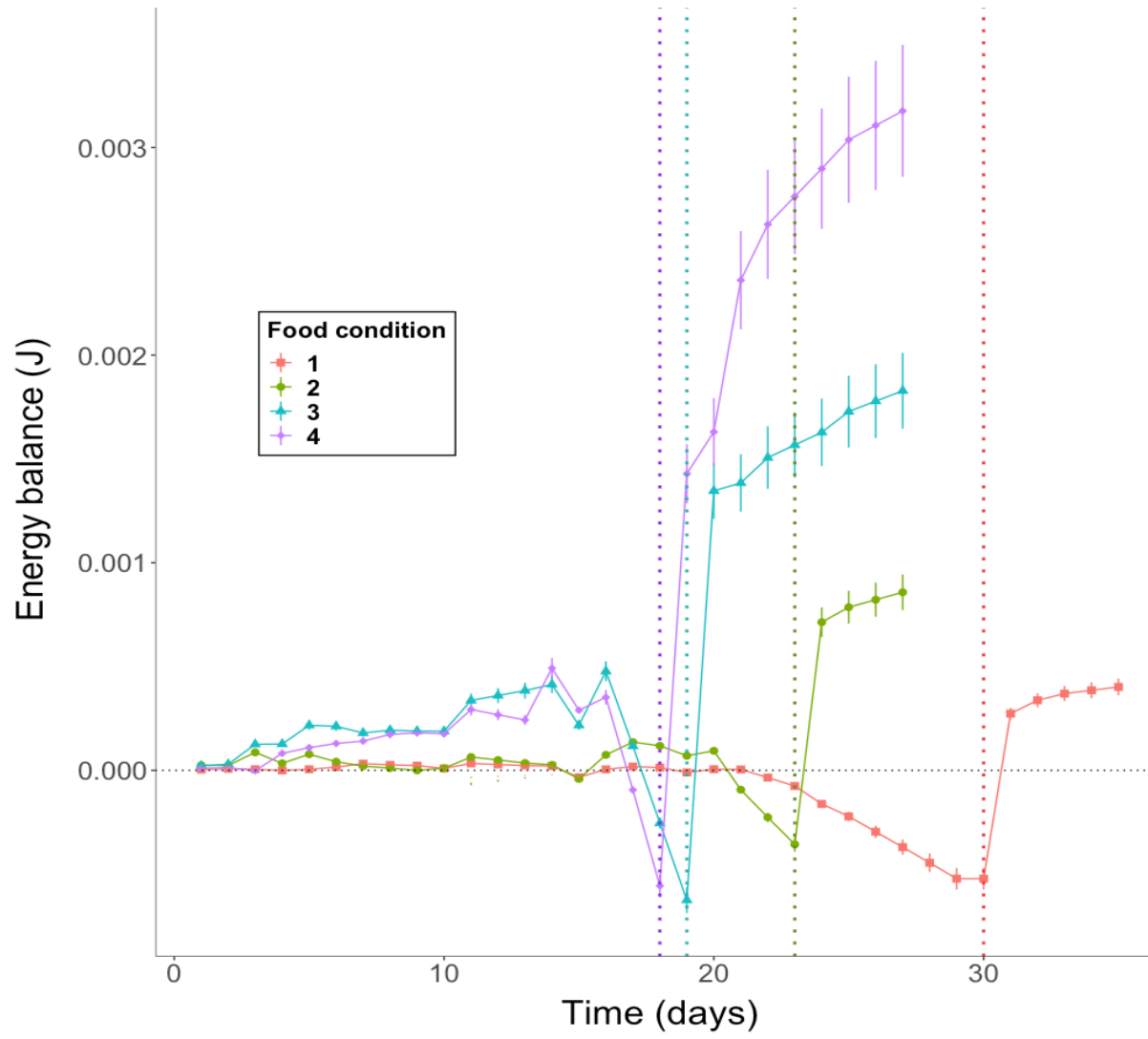
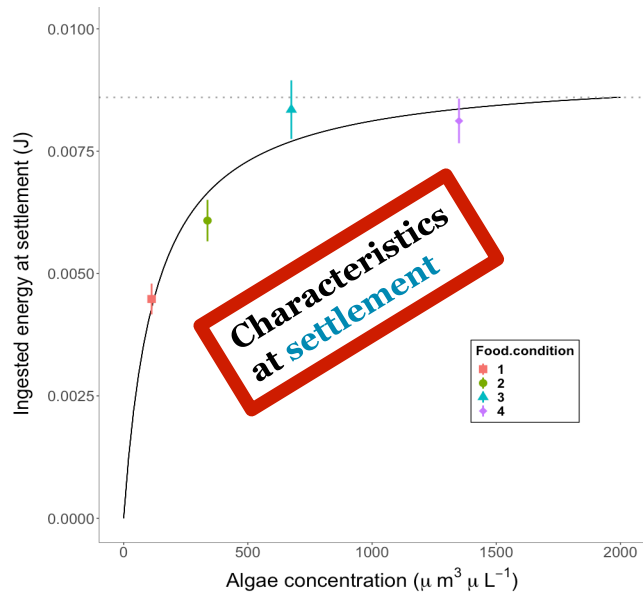


Characteristics at settlement



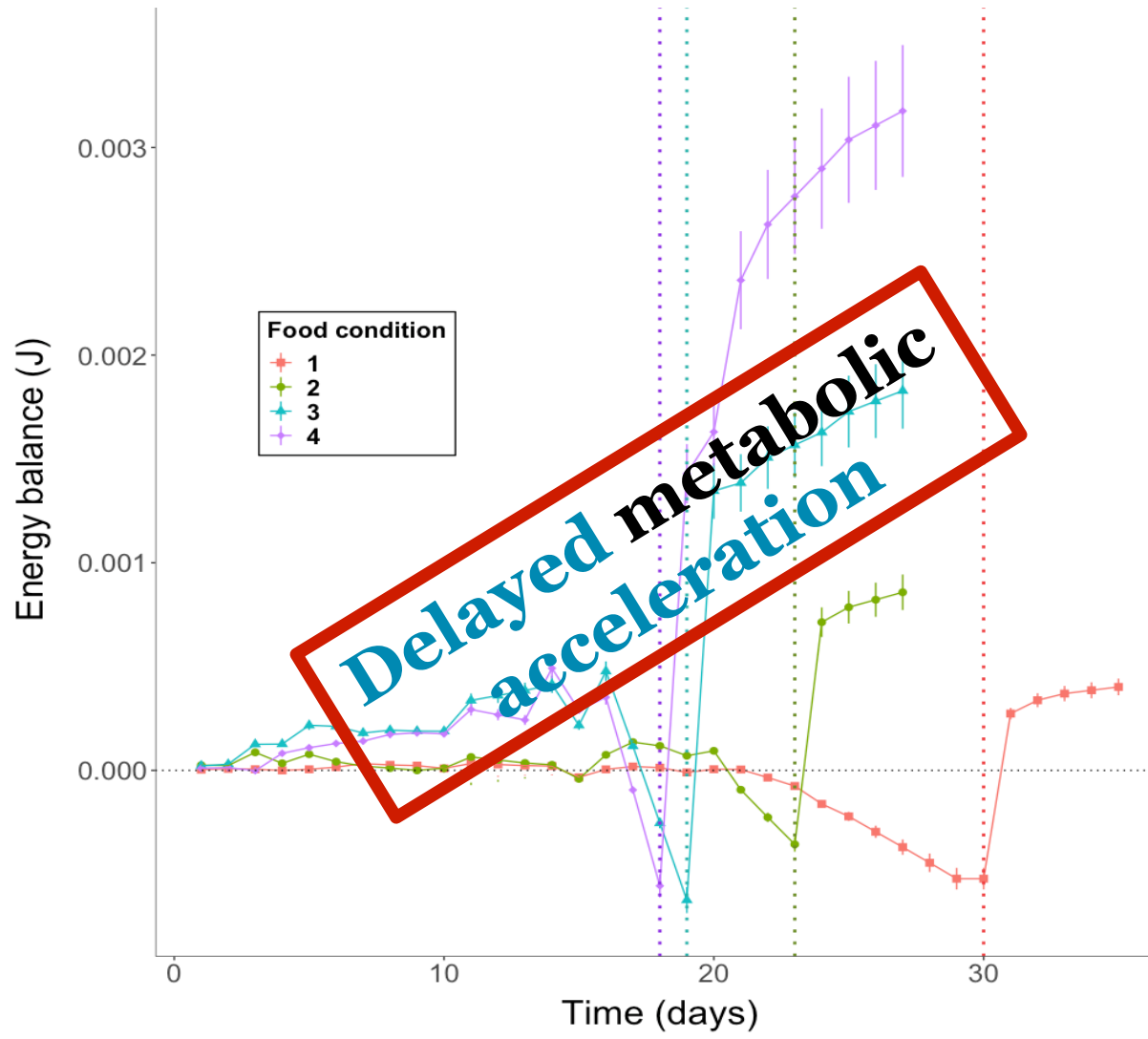
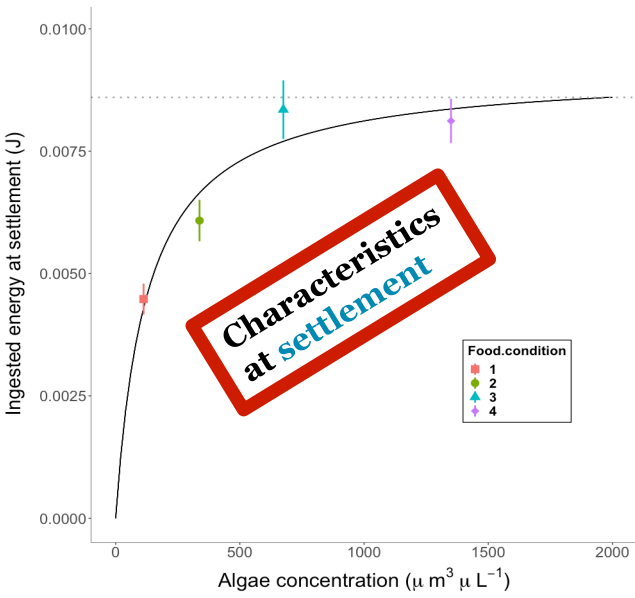


Metabolic shifts associated with changes in life stages





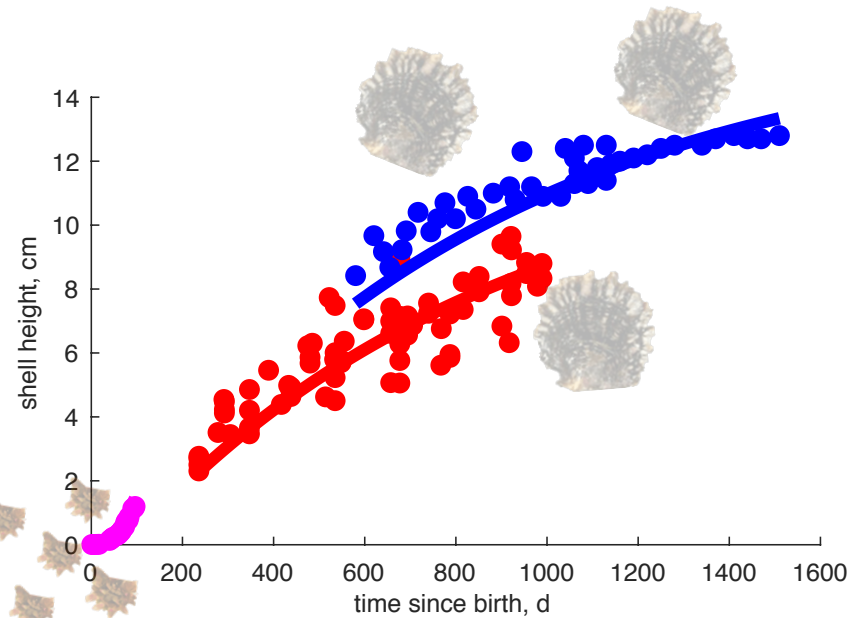
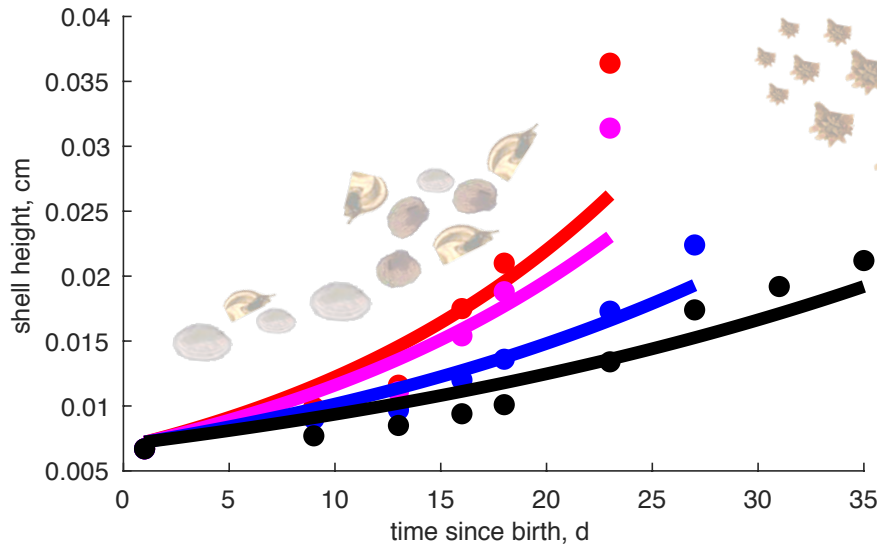
Metabolic shifts associated with changes in life stages





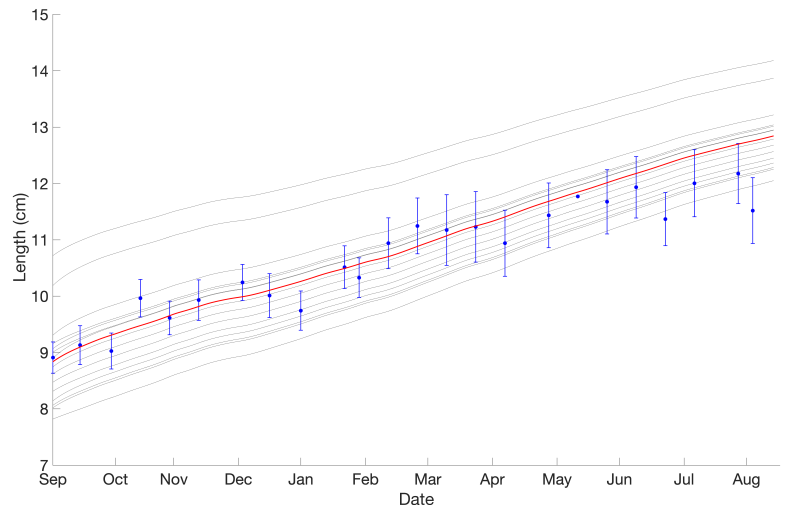
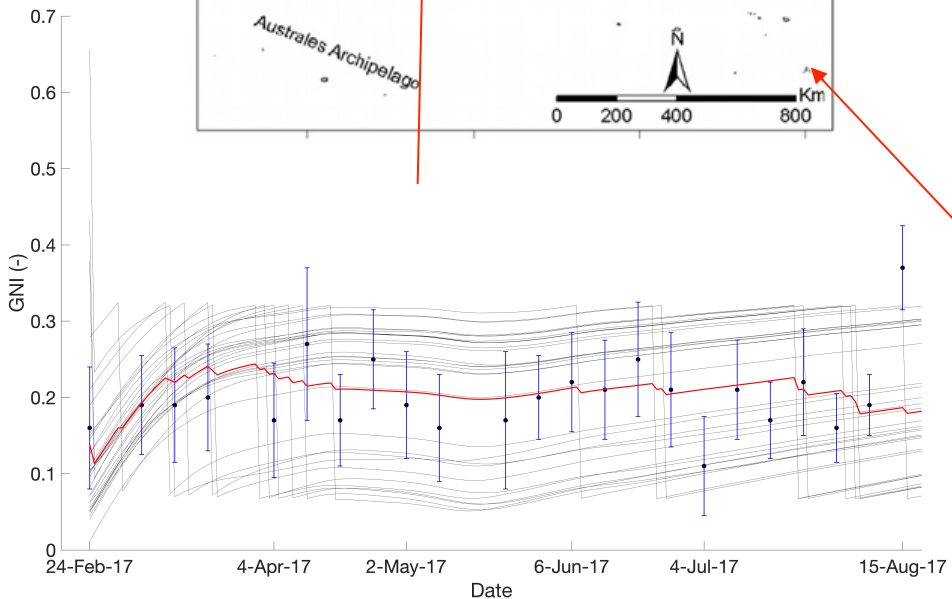
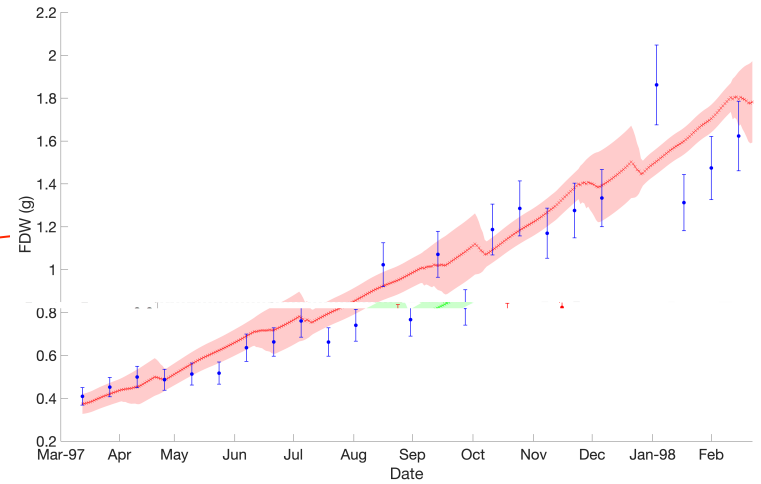
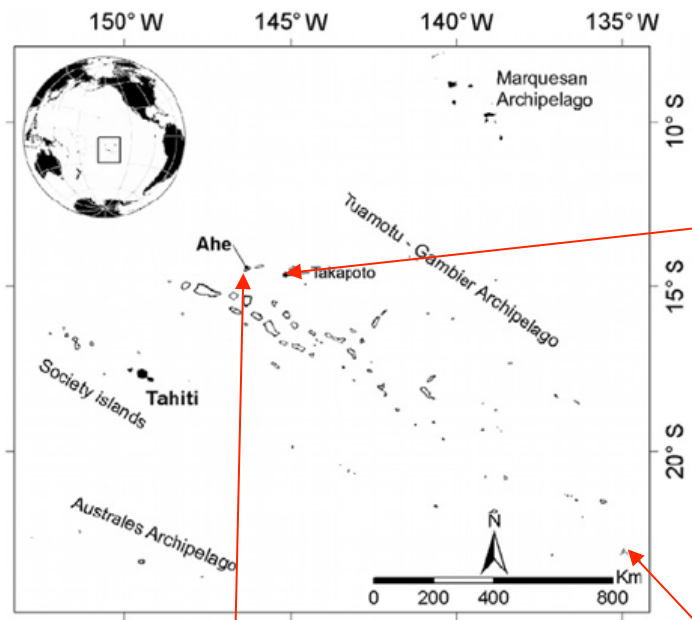
DEB model calibration

Model: asj
Complete: 3.4
MRE = 0.282
SMSE = 0.299



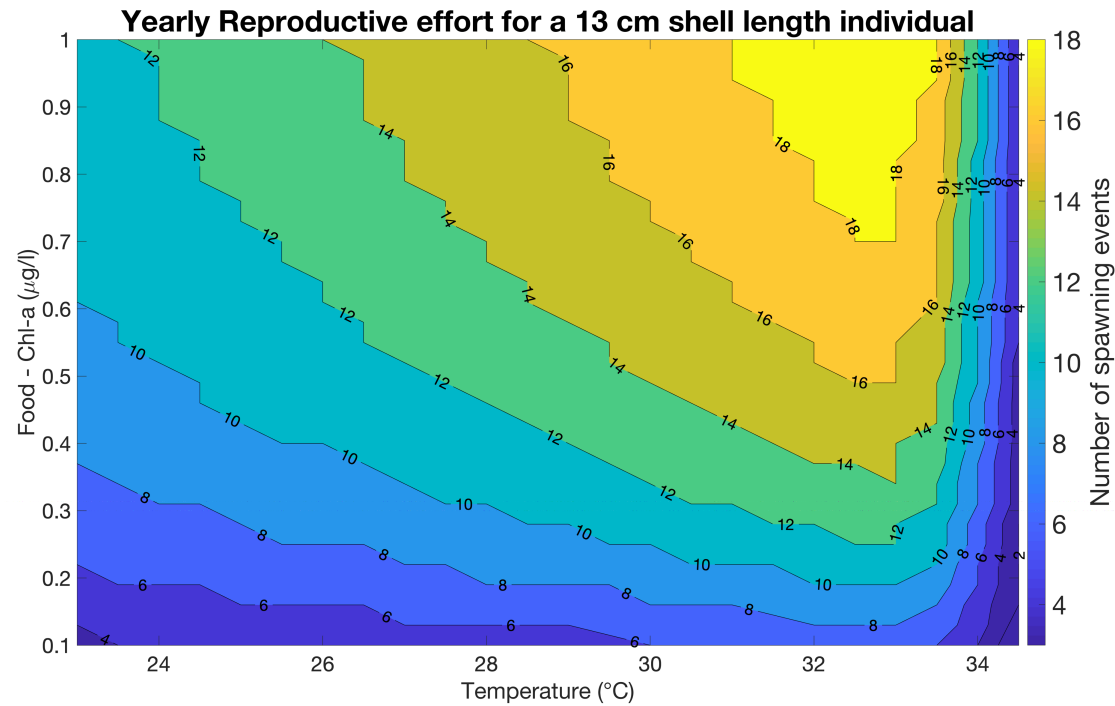


Model validation





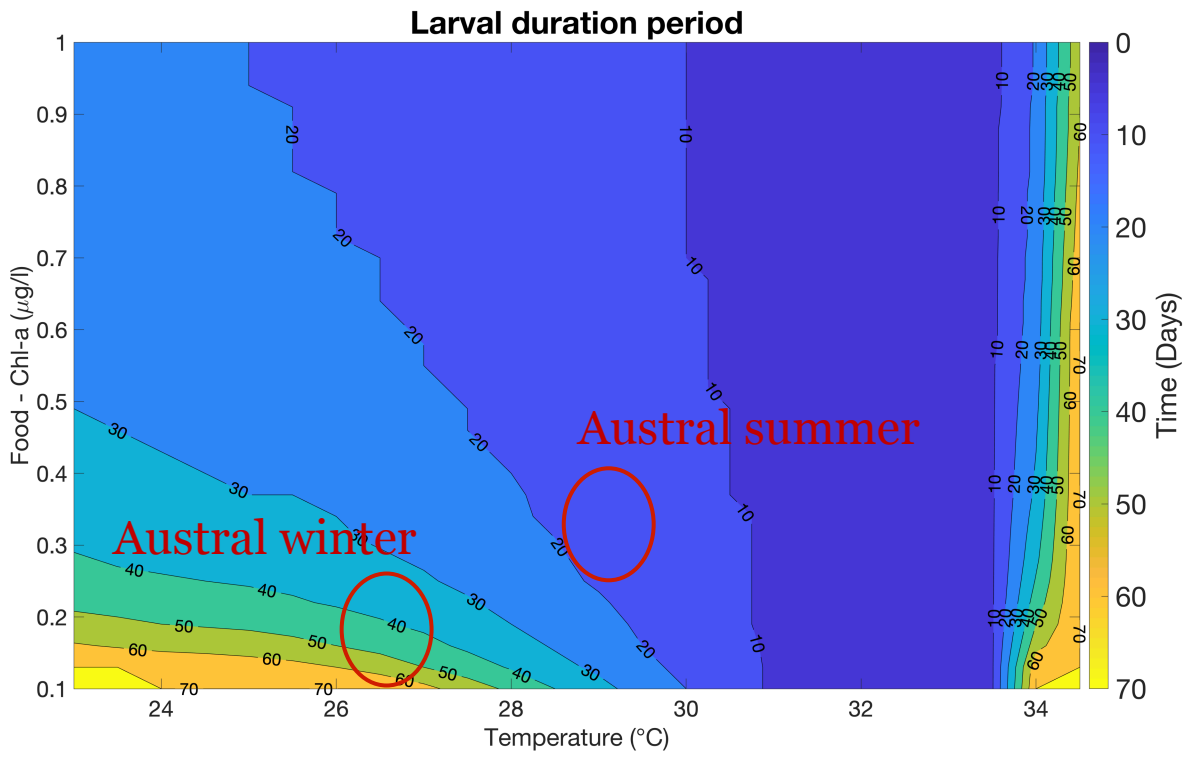
Environmental influence on reproduction



4 to 10 spawning events per year



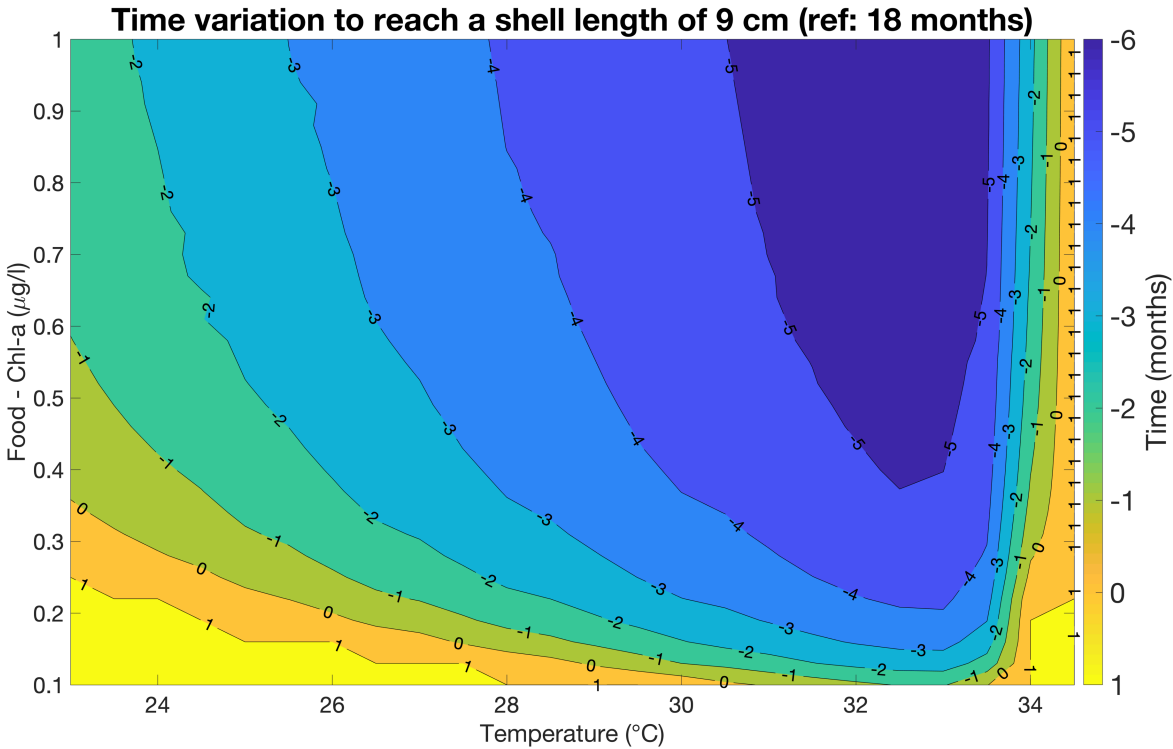
Environmental influence on larval development



From **15 to 70** days before settlement



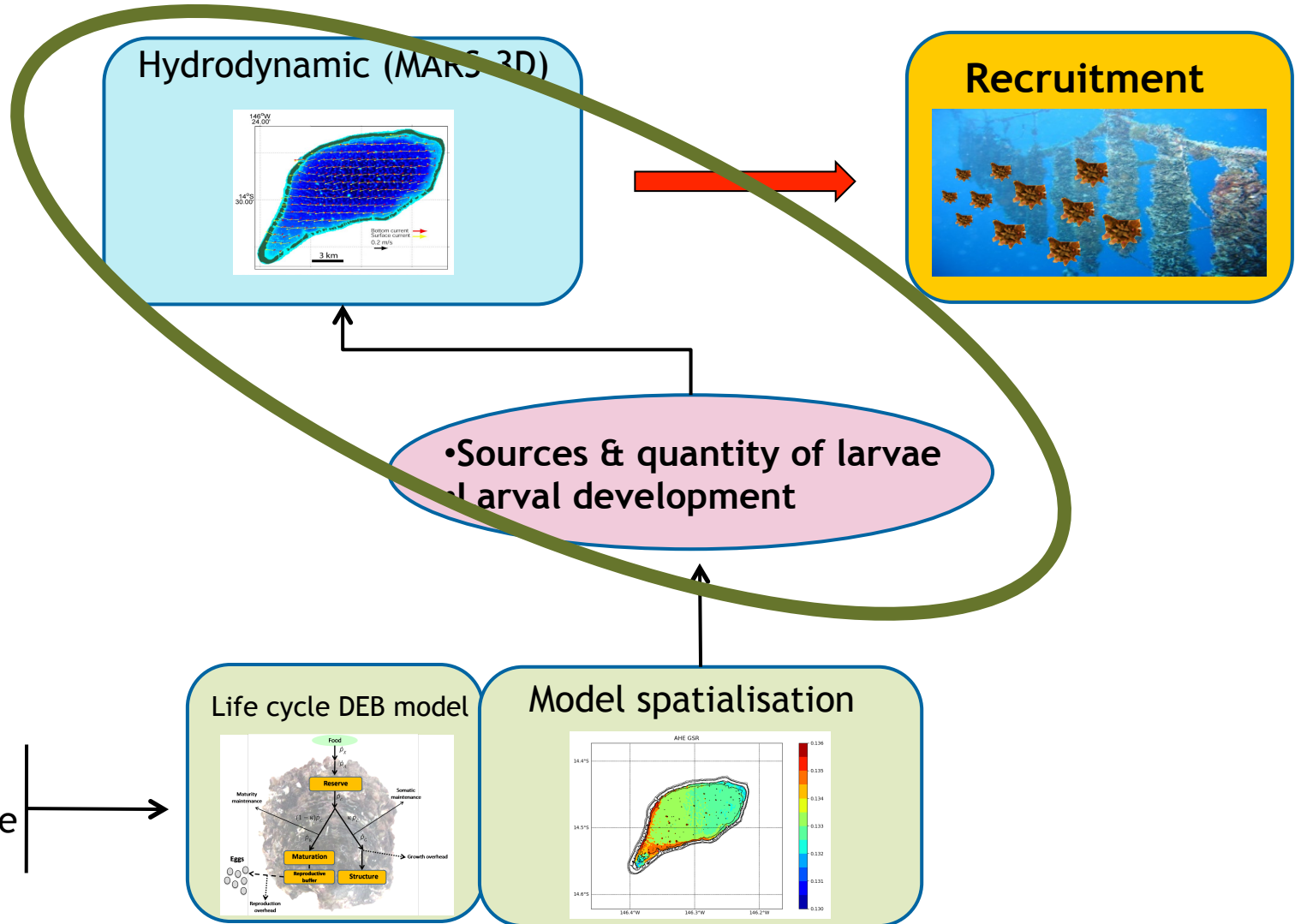
Environmental influence on time required before the first graft



From 16 to 22 months to reach 9 cm of shell length

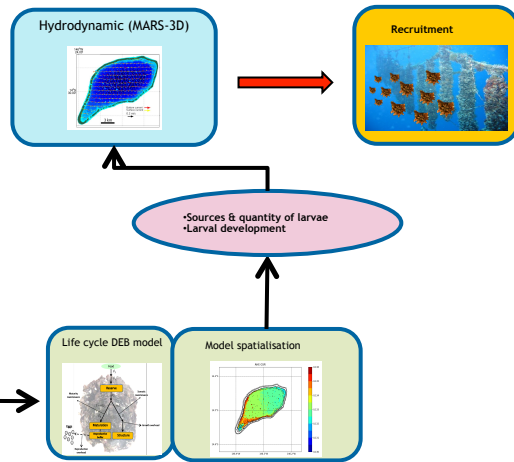


Global path advancement

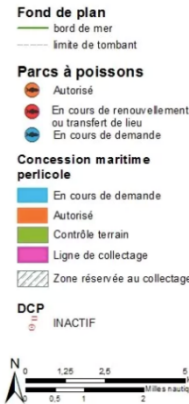




Pearl farming optimization and atoll management



AHE
Mise à jour Janvier 2019



Spatial zoning planning of:

- **Brood stock** areas
- **Rearing stock** areas
- **Spat collection** areas



Thank you for your attention